

DSP F/W VER. 01.07 & Front-END MCU F/W VER. 04 Installation

Please install the file 1 or file 2 according to your purpose. Then, follow the steps below to upgrade the Version of Model DL-2060.

DSP F/W VER. 01.09

File 1. 5407_01.09.pak which can update DSP firmware version.

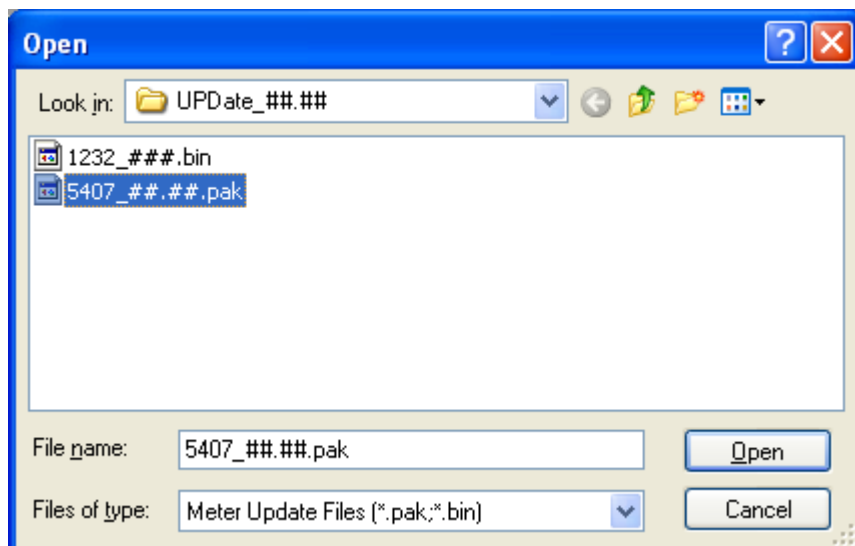
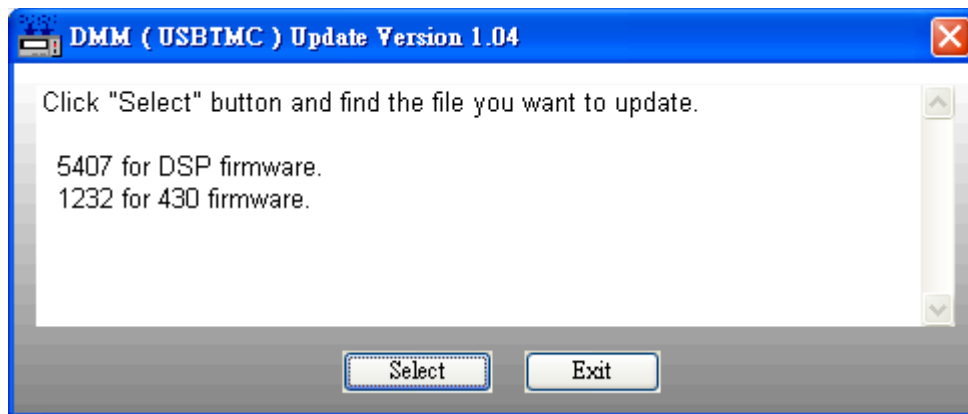
File 2. 1232_004.bin which can update 430 firmware version.

Notice: 5407_##_##_ means 5407_01.09,
1232_### means 1232_004

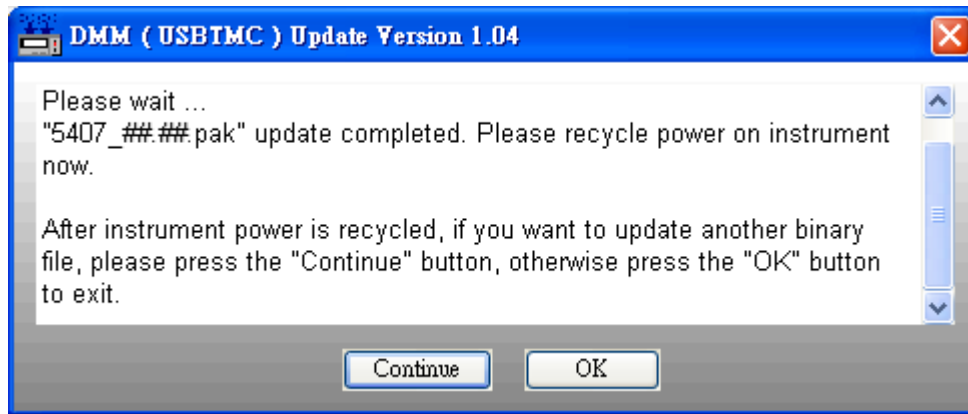
Step 1. Please make sure that your PC had been installed NI-VISA driver (The version must of NI-VISA 3.1 or later). If it hadn't, please download the driver from the NI website <http://www.ni.com>.

Step 2. Connect Model DL-2060 and PC via USB cable.

Step 3. Execute **DmmUpdate.exe** and click "**Select**" to choose the file **5407_01.09.pak** (if you want to update DSP firmware) for installation.



Step 4. When you see the window show up as below, please restart your Model DL-2060 DMM.

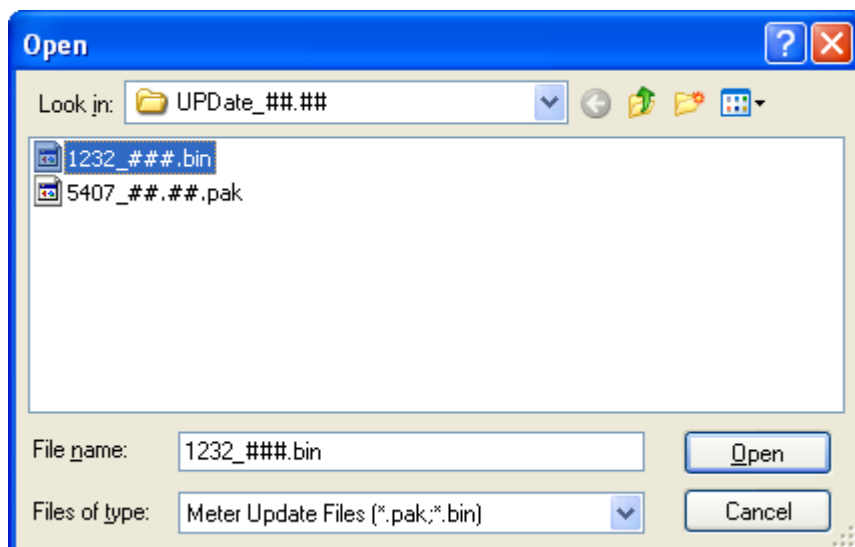


***Note:**

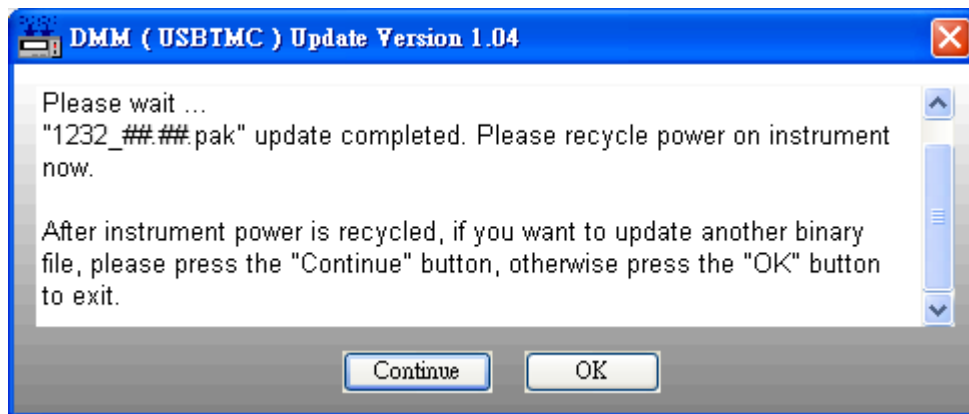
1. If there is no error message shown on the display that means you don't have to do further upgrade with file 2. Then, please do the step 6 to check the version.

2. If there is an error message shown on the display that means you have to do further upgrade with 1232_004.bin. Then, please ignore the "ERR" on the panel of Model DL-2060 after you restart it. The "ERR" will disappear after completing whole installation.

Step 5. After restarting the Model DL-2060, please click "**Continue**" and click "**Select**" again to choose the second file **1232_004.bin (if you want to update 430 firmware)**. And do the installation one more time.



Step 6. To complete the installation, please restart Model DL-2060.



Step 7. To confirm the upgrade is complete, you can do the following checks:

A. Press "DISPLAY-NEXT" to view the version.

The DSP Version should be 01.09.

B. Press "MENU/SYSTEM/SYSTEM VER."

The SYSTEM VER. should be 01.09-01-04.

If the result is incorrect, please try the installation again.