

## DSP F/W VER. 01.10 & Front-END MCU F/W VER. 04 Installation

Please install the file 1 or file 2 according to your purpose. Then, follow the steps below to upgrade the Version of Model DL-2060.

### DSP F/W VER. 01.10

**File 1.** 5407\_01.10.pak which can update DSP firmware version.

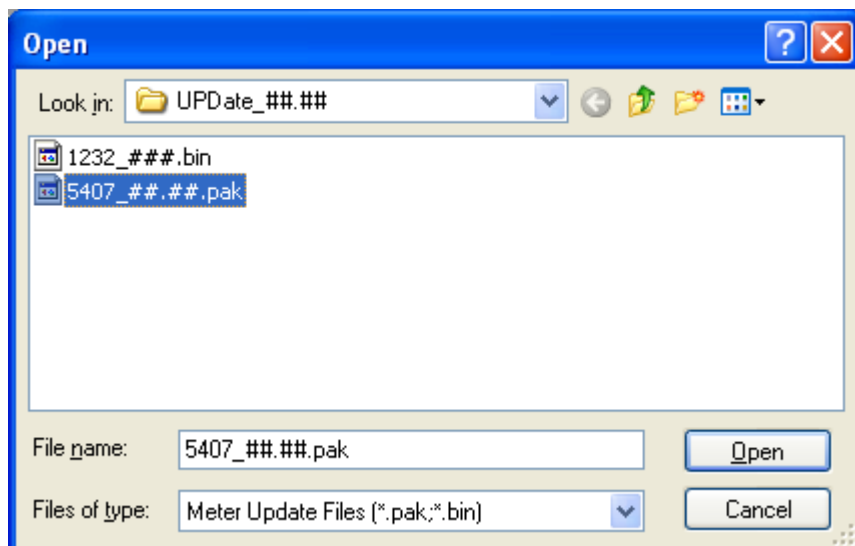
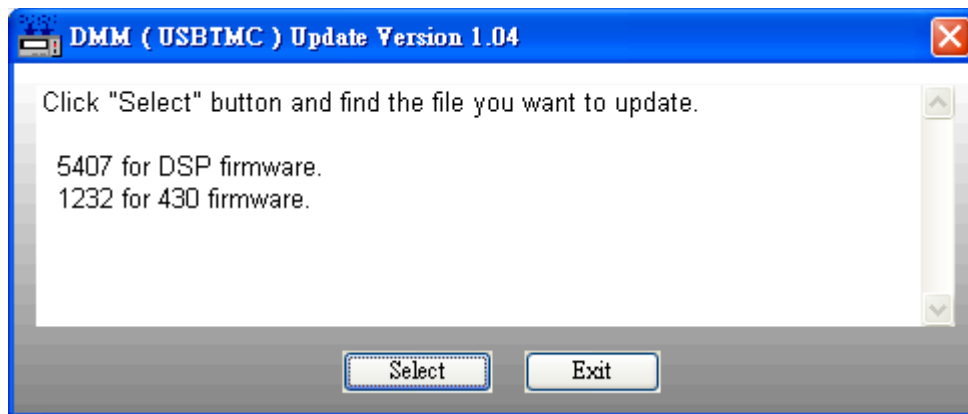
**File 2.** 1232\_004.bin which can update 430 firmware version.

**Notice:** 5407\_##\_##\_ means 5407\_01.10,  
1232\_### means 1232\_004

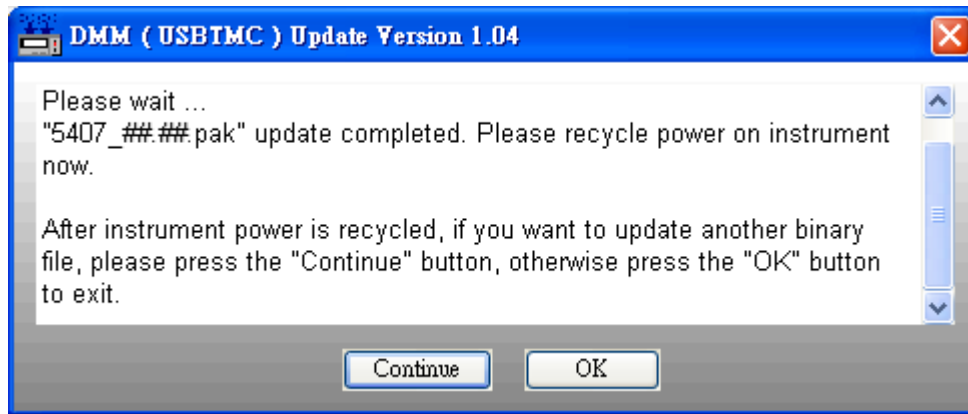
**Step 1.** Please make sure that your PC had been installed NI-VISA driver (The version must of NI-VISA 3.1 or later). If it hadn't, please download the driver from the NI website <http://www.ni.com>.

**Step 2.** Connect Model DL-2060 and PC via USB cable.

**Step 3.** Execute **DmmUpdate.exe** and click "**Select**" to choose the file **5407\_01.10.pak** (if you want to update DSP firmware) for installation.



**Step 4.** When you see the window show up as below, please restart your Model DL-2060 DMM.

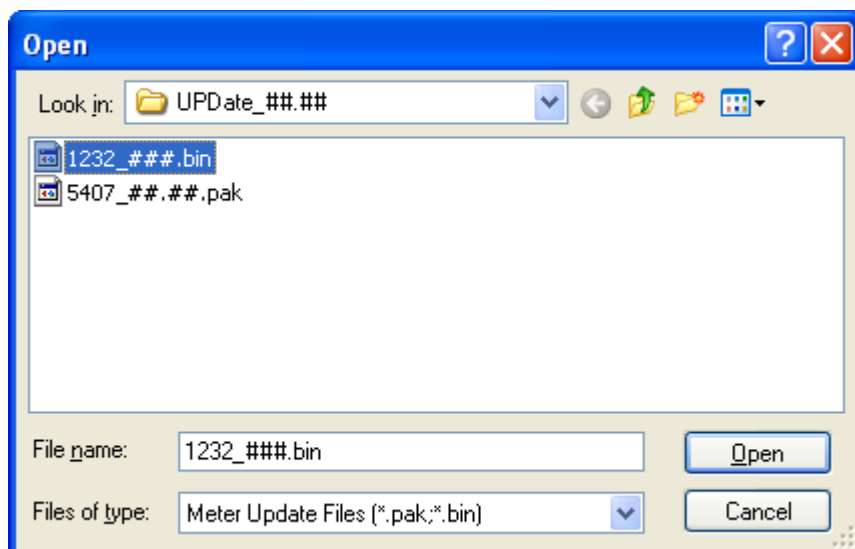


**\*Note:**

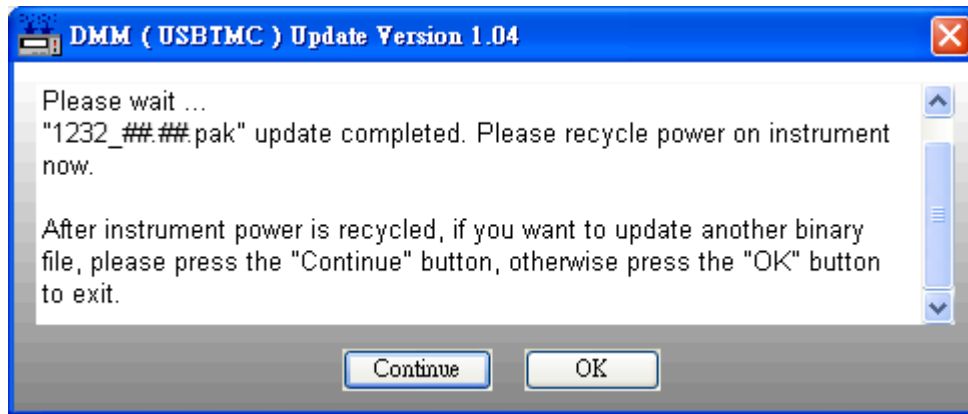
**1.** If there is no error message shown on the display that means you don't have to do further upgrade with file 2. Then, please do the step 6 to check the version.

**2.** If there is an error message shown on the display that means you have to do further upgrade with 1232\_004.bin. Then, please ignore the "ERR" on the panel of Model DL-2060 after you restart it. The "ERR" will disappear after completing whole installation.

**Step 5.** After restarting the Model DL-2060, please click "**Continue**" and click "**Select**" again to choose the second file **1232\_004.bin (if you want to update 430 firmware)**. And do the installation one more time.



**Step 6.** To complete the installation, please restart Model DL-2060.



**Step 7.** To confirm the upgrade is complete, you can do the following checks:

A. Press “DISPLAY-NEXT” to view the version.

**The DSP Version should be 01.10.**

B. Press “MENU/SYSTEM/SYSTEM VER.”

**The SYSTEM VER. should be 01.10-01-04.**

If the result is incorrect, please try the installation again.